

The Flex Program Logic Model Project

**National Flex Program Meeting
June 15-17, 2004
Chicago, Ill**



Flex PLM Team

University of Southern Maine: Andy Coburn,
John Gale, and Stephenie Loux

University of North Carolina at Chapel Hill:
Becky Slifkin and Stephanie Poley

University of Minnesota: Walt Gregg

Goals

- Design a framework for understanding and describing Flex program activities, accomplishments, and impact.
- Develop and test strategic planning tools to assist states in the continuing development of their Flex Programs.
- Work with states and ORHP to identify potential Flex Program performance indicators.

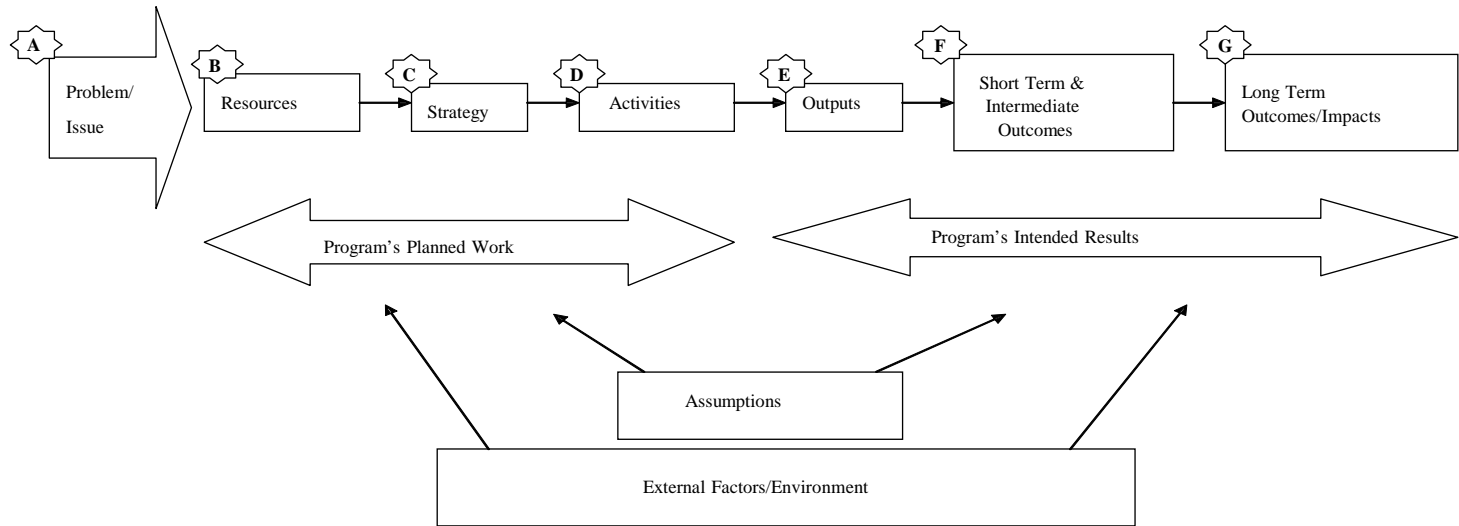
Approach

1. Develop PLM framework:
 - Work with 4 pilot states (Pennsylvania, Wisconsin, Arkansas, Washington), TASC and Flex Committee of NOSORH to design and assess PLM approach.
2. PLM/strategic planning toolkit
 - Work with TASC to design and test toolkit.
 - Develop TA strategy.

What are Program Logic Models (PLMs)?

- PLMs are used in program planning, management and evaluation to:
 - Understand how *program resources* are used to implement key *strategies* and *activities*, and
 - How their implementation contributes to expected *outputs* and *short and long term outcomes*.

Components of a PLM



Developing a PLM

- Verifying and clarifying Program strategies, activities, and resources;
- Specifying intended outcomes for each core goal and associated strategies/components;
- Clarifying the problems/issues on which Program components are based, underlying Program assumptions, and external environmental factors.



Challenges

- PLMs: a tool for strategic planning and/or evaluation?
- Year to year framework of the Flex program limits longer range program planning;
- Complexity of designing indicators that capture **implementation, behavior/performance change, and impact - short and longer term;**
- Designing performance indicators appropriate to the scope and scale of the Flex Program (e.g. To what extent can/should we specify longer term outcomes?)

Progress and Plans

- Conducted 3 of 4 state visits-finalizing state PLMs with states;
- Work with pilot states, TASC and NOSORH Flex Committee to assess PLM framework and assess indicators and measures;
- Develop report: “Using Program Logic Models for Strategic Planning and Evaluation in Flex Program”